

HIGH SPEED CNC PRODUCERS

GRAPHITE ELECTRODE MACHINING
PROTOTYPE MACHINING
INDUSTRIAL ENGRAVING
CERAMIC MACHINING
MOLD MAKING
WOOD ROUTING
PCB ROUTING
PANEL MACHINING
SMALL HOLE DRILLING
JEWELRY MACHINING
PLASTICS MACHINING



ACCURACY
SPEED
ENDURANCE
RELIABILITY

NASA
Machine Tools, Inc.

NASA PRODUCER - Built for Accuracy, Speed, Endurance and Reliability

The **PRODUCER** is a high speed, gantry-type, CNC machining center designed for production milling, drilling, engraving, routing, grinding, and profiling.

All **PRODUCER** machining centers offer a heavy duty, Meehanite cast iron construction, the Fagor 8055 high speed, state-of-the-art CNC control system, ultra precision ballscrews and heavy duty linear guideways, assuring positioning accuracies at high speeds. With the rigid gantry design, higher speeds, closer tolerances, smoother finishes and longer tool life can be obtained.

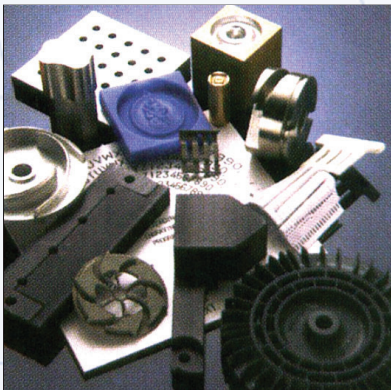
The **PRODUCER** is offered with many different spindle configurations, depending on the application.

Two (2) of the most common spindles offered is a 60,000 RPM, liquid cooled spindle, with an ISO 10 taper, and a 24,000 RPM, liquid cooled spindle, with an HSK taper, or ISO 30 taper.

The compact design of the **PRODUCER** makes this machine ideal for many applications, including graphite electrode machining, mold making, 2D and 3D engraving, and wood routing.

*Compare the **PRODUCER** to any other machine on the market, and see why we are light years ahead of our competition.*

Ideal Applications:



Graphite Electrode Machining
Prototype Machining
Industrial Engraving
Ceramic Machining
Mold Making
Wood Routing
PCB Routing
Panel Machining
Small Hole Drilling
Jewelry Machining
Plastics Machining

PRODUCER Features

- 1 Gantry design
- 2 Direct drive, closed loop, AC, or DC, servo drive motors with quick disconnects
- 3 Independently programmable vertical (z) axes (optional)
- 4 State-of-the-art FAGOR 8055, 32 byte, CNC control system, with 11" color LCD
- 5 Pendant-type control mount with portable hand wheel (manual pulse generator)
- 6 Telescoping way covers for dust, and chip protection
- 7 Choice of spindle speeds, and horsepower, based on application
- 8 Precision ground, t-slotted table (21.6" x 25.6")
- 9 Five (5) point leveling system
- 10 Heavy duty, Meehanite, cast iron construction
- 11 Automatic, timed lubrication, with low oil sensor
- 12 Automatic tool changer (10-16 tools)
- 13 Optional probing device for probing or digitizing
- 14 State-of-the-art electronics
- 15 High torque, direct drive motor couplings on all axes
- 16 Ultra precision ballscrews, and linear guides on all axes
- 17 X-Y-Z home and limit switches



CNC CONTROL

(FAGOR MODEL 8055)

- ▶ Five (5) axis capability
- ▶ 32 byte microprocessor
- ▶ 11" color LCD monitor
- ▶ Absolute/incremental programming
- ▶ Tool path graphics
- ▶ Mirror imaging
- ▶ 4 Megabytes of memory
- ▶ Milling and drilling canned cycles
- ▶ Tool length compensation
- ▶ Scaling
- ▶ Pattern rotation
- ▶ Parametric programming
- ▶ Geometric programming aids
- ▶ Circular interpolation
- ▶ Tool radius compensation
- ▶ Background editing
- ▶ Plus much, much more

PRECISE SPINDLE

- ▶ Precise, model SC3062
- ▶ High frequency, liquid cooled
- ▶ Programmable spindle speeds up to 60,000 RPM
- ▶ 1.74 Horsepower
- ▶ Quick change tool capacity
- ▶ ISO 10 taper
- ▶ 3/8" collet capacity
- ▶ Refrigeration system

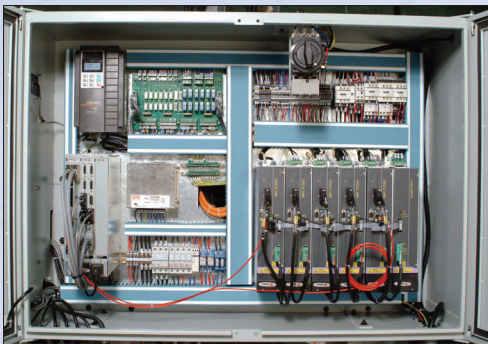


MACHSWISS SPINDLE

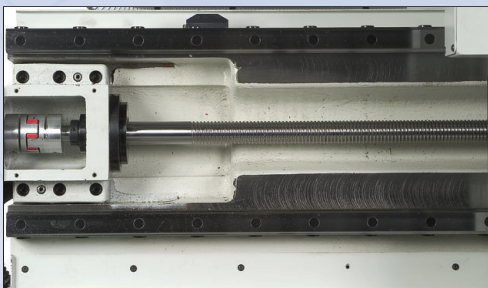
- ▶ Machswiss, model WF-140
- ▶ High frequency, air cooled
- ▶ Programmable spindle speeds up to 24,000 RPM
- ▶ 11.4 Horsepower
- ▶ Quick change tool capacity
- ▶ HSK 63, HSK 50, or ISO 30 taper
- ▶ Double air fan for better cooling capacity
- ▶ "ALL-IN-ONE" air supply



*The **PRODUCER** is ideal for machining graphite, ceramic, platinum, plastic, brass, gold, aluminum, steel, wood and most other materials.*



State-of-the-art electronics



Ultra precision ballscrews, and linear guides on all axes



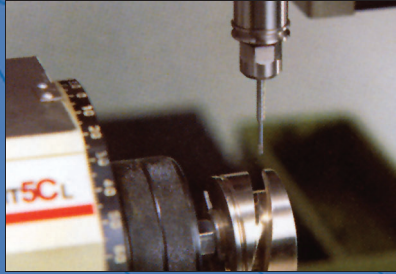
Automatic tool changer



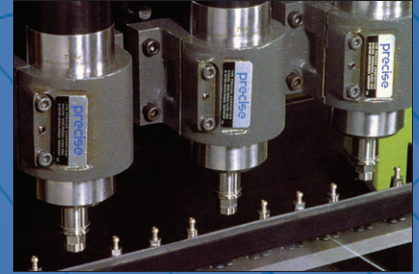
Independently programmable vertical (z) axes (optional)

Optional Features

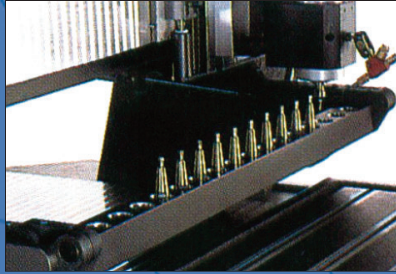
- ▶ Programmable 4th axis rotary table
- ▶ Programmable 5th axis rotary table
- ▶ Multiple spindle configuration (1, 2 or 3)
- ▶ Programmable *articulating* spindle
- ▶ Tray type, or carousel type toolchanger
- ▶ Probing or Digitizing
- ▶ Full enclosure for dust, or chip containment
- ▶ Independently programmable vertical (Z) slides
- ▶ Flood or mist coolant system
- ▶ Automatic tool length measuring device
- ▶ Dust collection system
- ▶ Turnkey solutions



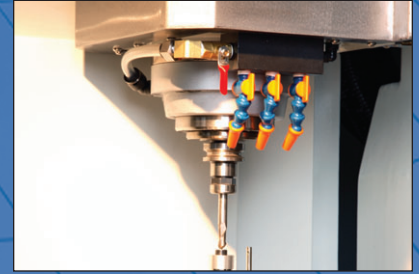
Programmable 4th Axis Rotary Table



Multiple Spindle Design



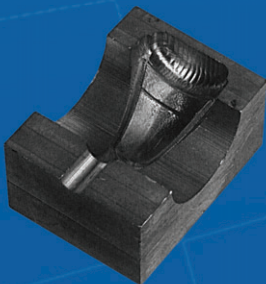
Tray-type Tool Changer



Automatic Tool Length Measuring Device



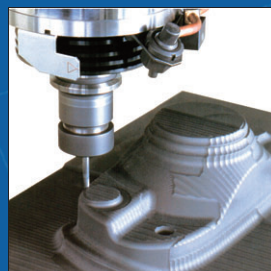
With its full enclosure, and heavy duty spindle configuration, the PRODUCER 2031-G, is specifically designed for machining **graphite electrodes**, and similar type materials, that require dust containment. This machine features a 6 H.P. spindle, and offers spindle speeds up to 24,000 RPM.



Ring Mold



Graphite Electrode



Electrode



Wood Routing

Specifications

CAPACITY	PRODUCER 2031	PRODUCER 2031-G
X Axis Travel (table)	30"	24"
Y Axis Travel (bridge)	20"	20"
Z Axis Travel (vertical)	7.75"	12.5"
Table Dimension	21.6" x 25.6"	21.6" x 25.6"
T-slots	5 x 4" ∇	5 x 4" ∇
Table Load Capacity	1200 lbs.	1200 lbs.
Spindle RPM (Programmable)	10,000-60,000	8,000-24,000
Spindle Horsepower	1.74 (Standard)	6 (Standard)
Spindle Taper	ISO 10	NBT 30
Automatic Tool Changer	10 Tools (Tray Type)	16 tools (Carousel Type)
Rapid Travers Rate	600 IPM	600 IPM
Minimum Programmable Resolution	.0001" (.000010" Opt.)	.0001" (.000010" Opt.)
Positioning Accuracy (X, Y, Z)	+/- .0001"	+/- .0001"
Positioning Repeatability (X, Y, Z)	+/- .000080"	+/- .000080"
Machine Weight	6,000 lbs.	8,300 lbs.
Floor Space (L x W x H)	72" x 72" x 102"	78" x 78" x 102"
Air Requirement	100 PSI	100 PSI
Power Requirement	220V, 3 Phase (440V Opt.)	220V, 3 Phase (440V Opt.)

Warranty: NASA warrants its products for a period of one (1) year from the shipment date. The warranty covers all defects in materials and workmanship.

Company Profile



Since our inception in 1979, NASA Machine Tools has earned a reputation as a top-quality, CNC machine tool manufacturer, and service mandated company, with thousands of installation worldwide.

NASA
Machine Tools, Inc.

1B Frassetto Way, Lincoln Park, NJ 07035

PHONE:

973-633-5200

FAX: 973-633-5727

EMAIL: sales@nassamachine.com

WEBSITE: www.nassamachine.com

Today, NASA Machine Tools is a global resource, with an established distribution network, serving small, medium, and large size companies. Among our fortune 500 customers, many are technological leaders in their field, including ITT, Corning, United Technologies, ALCOA, Lockheed, G.E. and General Motors.

NASA's high speed, CNC PRODUCERS, are known throughout the world, for offering speed, reliability, extreme accuracies, and continuous throughput.

Our company philosophy is to provide our customers with the "very best" in technology, and continued support.

We sincerely expect that the combination of progressive management, and continual R & D technology, will ensure the attainment of continued success, and growth, throughout the coming decades.

Distributed by:

